



FLAVOR SOLUTIONS!

ONE VANILLA LANE
NORTHVILLE, MI 48167
TEL: 800-521-3888-FAX: 248-349-1505
WEBSITE: WWW.JOGUE.COM

TABLE OF CONTENTS

<u>Description</u>	<u>Page No.</u>
Background Info.....	1
Dairy Ingredients.....	2
Pure Vanilla Extracts.....	3
Natural Vanilla WONF's	4
Natural Flavors Cat I.....	5
Natural & Artificial Flavors Cat II.....	6-7
Chocolate Dairy Powders.....	8
Ice Cream Flavor Bases & Variegates.....	9-12
Ice Cream Toppings.....	13
Flavors for Frozen Treats.....	14
Yogurt/Culture Products	15
Processed Cherries.....	16
Milk Flavors (Fortification).....	17
Dairy Fruit Drink Bases.....	18-19
Iced Teas.....	20
Spray Dried Flavors.....	21
Bakery Flavors.....	22-24
Confectionary Flavors.....	25-26
Savory Flavors.....	27



Jogue Incorporated Background:

Jogue Incorporated, founded in 1984, is a full service flavor company providing quality extracts, flavors, toppings, specialty dairy ingredients and fragrances. Jogue utilizes four main manufacturing facilities and two public warehouses within the United States. The Jogue manufacturing plant located in Detroit, Michigan, specializes in the development and manufacture of fruit drink bases, spray dried flavors, iced tea bases and chocolate powders.

In 1991, Jogue Inc. acquired Northville Laboratories and its rich history of flavor manufacturing dating back to 1910. Northville Labs. specializes in the production of dairy ice cream flavors, extracts, variegates, and toppings. The 55,000 square foot facility in Northville, Michigan and 48,000 square foot building in Plymouth, MI are equipped with six 1000 gal. percolators for producing extracts. With its network of international vanilla bean, coffee, and cocoa growers, Northville Labs is able to secure the highest quality commodities at the most competitive prices.

In 1995, Jogue Inc. made a strategic acquisition of the Western Syrup Company, located in Santa Fe Springs, California from J & J Snack Foods. Jogue feels that with this acquisition it allows itself to continue to grow with the much-needed national exposure and allow itself to distribute more readily to western states. Jogue Inc./Western Syrup manufactures a full line of food service products such as ICEE brand frozen carbonated syrups, bar mixes, smoothies and juice concentrates. Equipped with three 300 gallon kettles, Western Syrup produces High Mountain brand ice cream toppings, bases, variegates, and flavors.

The most recent addition to the Jogue umbrella being Jogue Flavors de Mexico. The 2004 acquisition in Mexico City has helped Jogue expand manufacturing and distribution capabilities of syrups, flavors, and ice cream bases in the rapidly growing Mexican market.

Jogue's unquestioned leadership in the flavor and fragrance industry allow its product line to be distributed internationally. With our well-established network of experienced brokers, supplemented by our exceptional technical staff, Jogue is able to excel in the fast changing flavor world and solve the flavor challenges of tomorrow.

DAIRY INGREDIENTS

VANILLA:

CAT I: VANILLA EXTRACT:
Bourbon, Bali Indonesian, Mexican & Tahitian type blends.
Available in all strengths from 1 fold to 20 fold.

CAT II: PURE VANILLA EXTRACTS-VANILLIN:
Various blends available from 2 fold to 8 fold strengths.

CAT III: NATURAL & ARTIFICIAL VANILLA
Blends available which provide a pure vanilla taste.

BACKGROUND FLAVORS:

Flavors from Almond to Walnut are available in Cat I & Cat II.

CHOCOLATE SAUCES:

Available in a variety of bases and variegating marbles: Super Dutch, Bittersweet, and Liquid Chocolate Chip.

CHOCOLATE POWDER:

Jogue 6 lb. Blend is economical and tastes like it is pure. Available with or without artificial color.

CARAMEL & BUTTERSCOTCH:

Many types of bases and variegates that blend well with candies and nuts are available. The Praline Ribbon is one of the industry's best sellers.

EGG NOG: Available in Double Strength, Premium, and Light categories.

FRUIT PREPARATIONS:

Our trademark "Burgundy Cherries" and "Maraschino Cherries" are among the most popular preparations. Stabilized Strawberries, Peaches, Raspberries, and Apples are also available.

FRUIT PUREES:

Stabilized fruit bases are available in all flavor categories.

SHERBET BASES:

Available in Orange, Lime, Lemon, Raspberry, and Watermelon flavors.

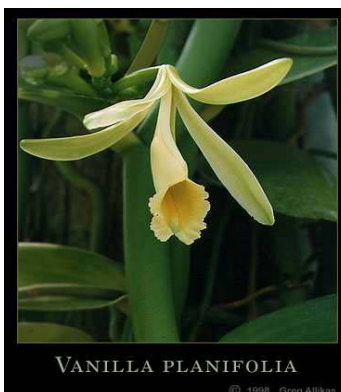
TROPICAL FRUIT BASES:

Kiwi, Pineapple, Passion Fruit, Banana, Mandarin, Orange, Cantaloupe, Lichee, and Guava are available.

DAIRY FRUIT DRINKS:

Fruit juice content of 50%, 10%, and less than 5% are available in all categories.

VANILLA EXTRACTS



VANILLA EXTRACTS-CATEGORY I

<u>Code #:</u>	<u>Description:</u>	<u>Conc:</u>	<u>Rec Usage/100 gals:</u>
F-1745	Pure Vanilla Extract	1 Fold	80ozs
F-1883	Pure Vanilla Extract	2 Fold	40ozs
F-1970	Premium Vanilla Extract	2 Fold	40ozs
F-1880	Pure Vanilla Extract	2 Fold	40ozs
F-1774	Pure Vanilla Extract	4 Fold	20ozs
F-2820	Bourbon Vanilla Extract	1 Fold	80ozs
F-3050	Bourbon Vanilla Extract	2 Fold	40ozs
F-3244	Bourbon Vanilla Extract	3 Fold	30ozs

Other extracts available upon request.

PURE VANILLA EXTRACTS WITH VANILLIN CATEGORY II

<u>Code #:</u>	<u>Description:</u>	<u>Conc:</u>	<u>Rec Usage/100 gals:</u>
F-1884	Vanilla Extract-Vanillin	2 Fold	40ozs
F-1885	Vanilla Extract-Vanillin	4 Fold	20ozs
F-1884S	Vanilla Extract-Vanillin	4 Fold	20ozs
F-2596	Vanilla Extract-Vanillin	6 Fold	15ozs
F-1829	Vanilla Extract-Vanillin	8 Fold	10ozs
F-3858	Vanilla Extract-Vanillin (Indonesian)	8 Fold	10ozs
F-4164	Vanilla Extract-Vanillin (Bourbon)	8 Fold	10ozs

- Jogue works directly with growers in India & Madagascar, where advanced vanilla cultivation practices use aromatic and flavor rich plant species. Jogue's partnership with growers eliminate volatility in price and quality.

PACKAGING: 4x1 GALLON PLASTIC JUGS, 55 GAL PLASTIC DRUMS.

NATURAL & ARTIFICIAL VANILLA FLAVORS



<u>Code #:</u>	<u>Description:</u>	<u>Conc:</u>	<u>Rec Use per 10 gal mix:</u>
Recommended for Generic Dairy Products:			
VE-180	Economy Vanilla	8 Fold	1-1.5 oz.
VE-181	Economy Vanilla	12 Fold	.5-1 oz
VE-181	Economy Vanilla	6 Fold	1.5-2 oz.
Recommended for Category III Quality Ice Cream Products:			
F-0020	Imitation Vanilla Conc.		1-1.5 oz.
F-0022	Imitation Vanilla Concentrate	8 Fold	.5-1 oz.
F-0026	Natural & Artificial Vanilla	6 Fold	1.5-2 oz.
F-4998	Natural & Artificial Vanilla	3 Fold	2-4 oz.
F-907	Imitation Vanilla	10 Fold	.5-.75 oz.
F-403	Imitation Vanilla	16 Fold	.125-.5 oz.
Recommended for Premium Category III Quality Ice Cream Products:			
F-1037	Imitation Vanilla	4 Fold	1.5-2.5 oz.
F-1064	Imitation Vanilla	8 Fold	.75-1.5 oz.
F-1705	Imitation Vanilla	1 Fold	3-4 oz.
F-1706	Imitation Vanilla	2 Fold	1.5-2 oz.
Recommended for Ice Cream, Ice Milk, and Soft Serve Products:			
F-1613	Ice Milk Vanilla Extract	4 Fold	2-3 oz.
F-1708	Art. Custard Vanilla	8 Fold	1-1.5 oz.
F-1719	Art. Vanilla w/ Color		.5-1 oz.
F-1706	Imitation Mexican/Bourbon Vanilla		1-2 oz.
Recommended for Specialty Products:			
F-3447	Imitation Venetian Style		1.5-2 oz.
F-1614	Imitation Butter Vanilla		1-1.5 oz.
F-3562	Natural Vanilla WONF	4 Fold	As Req'd
Natural Vanilla WONF Flavors:			
F-5009	Natural Vanilla WONF	3 Fold	2-3 oz.
F-4885	Natural Vanilla WONF	4 Fold	1.5-2.5 oz.
F-4728	Natural Vanilla WONF	2 Fold	3-4 oz.
F-4951	Natural Vanilla WONF Vanillin	4 Fold	1.5-2.5 oz.
F-5099	Natural Vanilla WONF	2 Fold	3-4 oz.
F-5042	Natural Vanilla WONF	4 Fold	1.5-2.5 oz.
W-3050	Natural Vanilla WONF	2 Fold	3-4 oz.
W-1745	Natural Vanilla WONF	1 Fold	8-10 oz.

NATURAL FLAVORS—CATEGORY I



<u>CODE#</u>	<u>DESCRIPTION</u>	<u>REC USE PER 10 GAL. MIX:</u>
F-3378	Almond Extract	4-8 oz.
95-503	Almond Burnt	3-4 oz.
F-1288	Amaretto Concentrate	4 oz.
F-4619	Apple WONF	4-12 oz.
F-1018	Banana Extract	24 oz.
F-2855	Blackberry WONF	8-12 oz.
F-1324	Black Walnut WONF	2-4 oz.
F-2593	Blueberry WONF	8-12 oz.
F-1820	Butter Pecan, Background Flavor	1-2 oz.
F-1892	Caramel Flavor	6-8 oz.
F-1800	Cherry, Black w/ color	1-2 oz.
F-2741	Cherry, Burgundy Concentrate	.5-2 oz.
F-3911	Cherry Emulsion	4-12 oz.
F-1812	Cherry Extract WONF (Sweet)	8-12 oz.
F-1813	Cherry Extract WONF (Black)	8-12 oz.
F-1814	Cherry Extract WONF (Black)	4-6 oz.
F-2732	Coconut Extract	32 oz.
F-1045	Coffee Concentrate	16-20 oz.
1500	Cola Flavor	2-12 oz.
F-1047	Crème de Menthe	1 oz.
F-1585	Crème de Menthe (clear)	.5-1 oz.
F-2505	Custard Flavor	2-3 oz.
F-1504	Ginger Extract	2-3 oz.
F-4553	Kiwi-Strawberry WONF	1-8 oz.
4554A	Kiwi-Strawberry Emulsion	1-8 oz.
F-1720	Lemon Custard w/ color	6 oz.
F-1505	Lemon Extract (terpeneless)	3-4 oz.
F-1532	Lime Extract (terpeneless)	3-4 oz.
F-945	Maple Flavor WONF	6-8 oz.
F-1803	Maple Flavor WONF (Vermont Maple Syrup)	3-4 oz.
98-133	Mint Emulsion w/ color	3-4 oz.
F-1534	Orange Extract (terpeneless)	3-4 oz.
F-989	Peach WONF (juice & puree)	16-32 oz.
F-1039	Peppermint Extract	2 oz.
F-1031	Pineapple WONF	4-6 oz.
F-1750	Pistachio Background Flavor	1-2 oz.
F-4582	Raspberry	8-12 oz.
28-712	Raspberry WONF (Black)	8-10 oz.
F-1726	Raspberry WONF (Conc. & Juice)	8 oz.
F-3314	Raspberry WONF (Red)	8-12 oz.
F-2093	Raspberry, Red (Juice & Puree)	8-12 oz.
F-925	Strawberry Extract WONF	6-8 oz.
F-1727	Strawberry Concentrate WONF	6-8 oz.
F-2128	Strawberry (Fruit & Juice)	8-12 oz.
F-4152	Strawberry Flavor	8-12 oz.
F-4270	Strawberry WONF	8-12 oz.

NATURAL & ARTIFICIAL FLAVORS- CATEGORY II



<u>CODE#:</u>	<u>DESCRIPTION:</u>	<u>REC. USAGE PER 10 GAL.MIX:</u>
F-2991	Amaretto	4-8 oz.
F-2540	Almond Extract	1-2 oz.
F-1798	Apple Flavor	4-5 oz.
F-1810	Banana Flavor	1-2 oz.
9008	Blue Raspberry Flavor	2-8 oz.
F-1825	Bourbon Flavor	1-2 oz.
F-1678	Brandy Flavor	4-8 oz.
F-1890	Bubble Gum Flavor	4-8 oz.
F-651	Butter Pecan Base	1-2 oz.
F-1711	Butter Pecan Base	1-2 oz.
F-1785	Butterscotch	1-2 oz.
F-4338	Cappuccino Flavor	4-8 oz.
F-106	Caramel	1-3 oz.
F-1081	Cheesecake	4-6 oz.
14-212	Cherry Flavor	4-8 oz.
14-035	Cherry Flavor	4-8 oz.
9006	Cherry Flavor	4-8 oz.
50-376	Cherry, Black	1-2 oz.
57-282	Cherry, Maraschino	1-2 oz.
F-1819	Cherry, Sweet	6-8 oz.
F-1671	Cinnamon Spice	1-2 oz.
F-1700	Coconut, Fresh	1-2 oz.
F-3627	Cream Concentrate	1-2 oz.
F-1630	Custard	1-2 oz.
12-070	Fruit Punch Flavor	4-8 oz.
14-036	Grape Flavor	4-8 oz.
F-6225	Guava Flavor	1-2 oz.
F-1480	Honey Flavor	4-6 oz.
F-3983	Kiwi Flavor	.05-.1 oz.
14-095	Lemon Flavor	4-8 oz.
F-3626	Malt Concentrate	1-2 oz.
F-2748	Maple Concentrate	1-2 oz.
F-5025	N&A Maple Syrup Flavor	.5-1 oz.
F-5054	N&A Maple Syrup Flavor	.5-1 oz.
F-4344	Art. Maple Flavor	.5-1 oz.
F-1808	Maple Flavor (Canadian)	2-3 oz.
40-109	Maple Nut Flavor	4-8 oz.
68-128	Mango Flavor	.5-1 oz.
14-211	Orange Flavor	4-8 oz.
F-6224	Papaya Flavor	.05-01 oz
F-1888	Peach Flavor, Ripe	4 oz.
F-1818	Pineapple Flavor	2-3 oz.

NATURAL & ARTIFICIAL FLAVORS- CATEGORY II



<u>CODE#</u>	<u>DESCRIPTION</u>	<u>REC USAGE PER 10 GAL. MIX:</u>
F-1636	Pistachio Extract	4-6 oz.
46-609	Pistachio Nut Extract	4-6 oz.
F-1816	Raspberry, Black	2-4 oz.
F-1840	Raspberry, Black & Red Blend	1-2 oz.
F-1640	Rum Flavor	1-2 oz.
F-1574	Rum Punch	2-4 oz.
F-1086	Spumoni Flavor	2-3 oz.
40-124	Strawberry Extract, Fresh	1-3 oz.
F-1788	Strawberry Flavor, Ripe	1-2 oz.
F-4391	Strawberry Flavor	1-6 oz.
14-037	Strawberry Flavor	2-6 oz.
F-2755	Strawberry Blend (Fruit & Essence)	2-4 oz.
F-944	Toffee, English	4-6 oz.
14-210	Tropical Punch WONF	2-6 oz.
F-4358	Twinberry Flavor	2-6 oz.
F-1088	Walnut, Black	2 oz.
14-100	Watermelon Flavor	2-6 oz.

- Other flavors available upon request.

CHOCOLATE DAIRY POWDERS



With our special alkali Dutch process, Jogue Inc. has developed several chocolate powders for use in milk as well as ice cream.

<u>CODE#</u>	<u>DESCRIPTION</u>	<u>REC. USAGE:</u>
#5	Premium Chocolate Powder	5 lbs./100 gal milk
#750	Premium Chocolate Powder	7.5 lbs./100 gal milk.
#8 SW	Premium Chocolate Powder	8 lbs./100 gal milk
#10	Premium Chocolate Powder	10 lbs./100 gal milk
#15	Premium Chocolate Powder	15 lbs./100 gal milk
#8 Skim	Premium Skim Chocolate Powder	8 lbs./100 gal milk
F-3803	Premium Cappuccino Powder	7 lbs./100 gal milk
F-5094	Low Carbohydrate Chocolate Powder	50 lbs./100 gal milk

- Jogue Chocolate Powders contain pure Dutch processed cocoa powders w/o any artificial Colors.

ICE CREAM FLAVOR BASES & VARIEGATES



CARAMEL, PEANUT BUTTER, CHOCOLATE BASES & VARIEGATES

<u>Product Code</u>	<u>Product Description</u>	<u>Category</u>
	<u>Peanut Butter Variegate:</u>	
62-575	Natural Peanut Butter Variegate	I
62-600	Peanut Butter Variegate	II
	<u>Caramel Bases:</u>	
62-501	Buttered Caramel Base	I
62-503	Buttered Caramel Base	II
62-506	Dulce De Leche Caramel Base	I
	<u>Caramel Variegates:</u>	
62-510	Low-Carb Caramel	I
92-128	Caramel Cream Ribbon	I
92-253	Caramel Fudge Ribbon	II
92-551	Caramel Spiral	I
92-112	Caramel Variegate	I
92-129	Praline Ribbon	I
	<u>Chocolate Bases:</u>	
52-052	Bittersweet Chocolate Base	I
52-064	Chocolate Malt Base	II
52-030	Dark Chocolate Base	I
80-002	Liquid Chocolate Chip	I
52-024	Old Fashioned Chocolate Base	I
52-012	Super Dutch Chocolate Base	II
52-013	Supreme Dutch Chocolate Base	I
	<u>Chocolate Variegates:</u>	
82-100	Low-Carb Chocolate Variegate	I
82-200	Aspartame Chocolate Variegate	I
92-283	Butter Cream Fudge	I
92-284	Butter Cream Fudge	II
82-074	Chocolate Curl Variegate	III
82-022	Chocolate Flavored Twirl	III
92-130	Chocolate Fudge (Tasty Mellow)	II
82-061	Chocolate Fudge Marble	I
82-010	Chocolate Fudge Variegate	I
82-063	Chocolate Marble	I
92-201	Chocolate Strata	I
92-010	Chocolate Variegate	I

ICE CREAM FLAVOR BASES & VARIEGATES



BUTTERSCOTCH BASES & VARIEGATES:

<u>Product Code</u>	<u>Product Description</u>	<u>Category</u>
62-215	Butterscotch Base	II
92-105	Butterscotch Marble Variegate	I
92-422	Butterscotch Twirl	III
62-378	Superscotch Base	II
62-379	Superscotch Base	I

STABILIZED FRUIT BASES:

<u>Product Code</u>	<u>Product Description</u>	<u>Category</u>
58-001	Apple Base, Spiced	I
62-040	Banana Base	II
62-016	Black Rasp-N-Berry Puree	III
58-021	Black Raspberry Flavored Puree	III
58-022	Black Raspberry Puree	I
62-032	Coconut Blanc Base	I
62-031	Coconut Blanc Base	II
62-025	Cherry Base	II
62-132	Nectarine Puree	III
56-020	Orange Pineapple, Red	II
56-026	Orange Pineapple	I
62-151	Peach Puree	I
62-156	Peach Puree, Brandied	I
62-256	Peach Melba, Brandied	III
62-164	Peaches, Diced	II
62-166	Peaches, Diced	I
56-014	Pineapple Base, Fine Cut	III
56-015	Pineapple Base, Fine Cut	I
58-017	Red Raspberry Puree	III
60-066	Fiesta Strawberry w/ or w/o color	I
60-066B	Strawberry Puree w/ color	II
60-077	Strawberry Puree	I
60-029	Strawberry, Sliced (Fruit Feeder)	I
60-085	Strawberry, Whole (Fruit Feeder)	I

FRUIT VARIEGATES:

<u>Product Code</u>	<u>Product Description</u>	<u>Category</u>
92-008	Blueberry Marble	II
92-017	Cherry Almond Marble	I
92-018	Cherry Marble	I
92-016	Cherry Rum Ribbon	II

ICE CREAM FLAVOR BASES & VARIEGATES



FRUIT VARIEGATES:

<u>Product Code</u>	<u>Product Description</u>	<u>Category</u>
92-800	Bananas Foster	I
92-006	Black Rasp-N-Berry Twist	III
88-066	Black Raspberry Marble	I
88-003	Black Raspberry Twist	III
92-011	Blueberry Ribbon	III
92-820	Key Lime	II
92-265	Orange Pineapple	I
88-019	Red Raspberry Marble	I
58-024	Seedless Red Raspberry	II
60-100	Low-Carb Strawberry Variegate	I
8-103	Mango Marble	II
90-011	Strawberry Marble	I
60-033	Strawberry Marble	II
90-080	Strawberry Swirl	III

SPECIALTY BASES:

<u>Product Code</u>	<u>Product Description</u>	<u>Category</u>
62-274	Black Licorice	III
62-205	Bubblegum Base	III
62-036	Buttered Pecan Base	I
92-866	Cake Batter Base	I
8-234	Caramel Cappuccino	I
F-4814	Cheesecake Base	I
8-145	Dulce de Leche	I
69-037	Egg Nog Base S.S. NVS.	II
69-087	Egg Nog Base S.S. VS.	II
62-394	French Egg Custard	III
62-399	French Vanilla Base	I
#803	Green Tea w/ or w/o Ginseng	I
98-112	Lemon Custard	II
62-088	Pina Colada Base	III
62-089	Pina Colada Base	I
8-100	Pomegranate	II
8-101	Prickley Pear	II
92-810	Pumpkin Base	I
62-231	Royal Cheesecake w/ color	III
62-232	Royal Cheesecake w/o color	III
62-514	Cream de Cocoa/Vanilla	I
8-102	Strawberry Cheesecake	II
92-830	Tiramisu	II
92-164	Marshmallow Marble	I
62-369	Rum Raisin	I

INNOVATIVE ICE CREAM FLAVORS



Banana Split (**New for 2010**)

Banana Cream Pie (**New for 2010**)

Black Raspberry Chip (**New for 2010**)

Bordeaux Cherry Vanilla (**New for 2010**)

Cake Batter Flavor w/ Fudge Marble Swirl

Caramel Apple w/ Stabilized Diced Apples & Caramel Swirl

Caramel Cappuccino (Starbuck's Macchiato Type)

Cinnamon Flavor with Red Hot Piece Inclusions

Coconut Flavor with Fudge Swirl (Mounds Candy Type)

Cotton Candy Flavor with Confetti Inclusions

Dulce de Leche w/ Caramel Spiral

Egg Nog Flavor (Seasonal)

German Chocolate Cake (**New for 2010**)

Hot Chocolate (**New for 2010**)

Key Lime Pie w/ Graham Cracker Crust Inclusions

Oatmeal Raisin Cookie (**New for 2010**)

Pomegranate Ice Cream

Pumpkin Pie w/ Pie Crust Inclusions (Seasonal)

Red Velvet Cupcake (**New for 2010**)

Strawberry Cheesecake w/ Cheesecake Piece Inclusions

Tahitian Sweet Vanilla w/ Honey Variegate (**New for 2010**)

Toasted Almond with Coffee Variegate

Horchata Flavor with Cinnamon Swirl (Hispanic Flavor)

**HIGH MOUNTAIN
ICE CREAM TOPPINGS AND
SOFT SERVE MIXES...**



**...THE ONLY THING MISSING,
IS THE CHERRY ON TOP!**

- Featuring a complete line of ready to use toppings.
- Great over ice cream, cakes, pies, or add to your favorite shake or smoothie.
- All fruit toppings contain large chunks of fresh fruit and fruit juices.

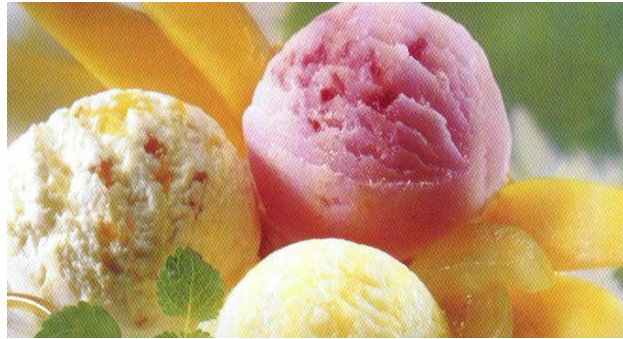
<u>CODE #</u>	<u>Product</u>	<u>Package size</u>
1845	Red Raspberry Topping	6x10, 6x5
5000	Chocolate Syrup	6x10, 6x5, 4x1, 6x1/2
5001	Hot Fudge Topping	6x10, 6x5
5003	Caramel Topping	6x10, 6x5
5004	Pineapple Topping	6x10, 6x5
5005	Strawberry Topping	6x10, 6x5
5006	Blackberry Topping	6x10, 6x5
5020	Butterscotch Topping	6x10, 6x5
5021	Cherry Topping	6x10, 6x5
5022	Chocolate Cone Coating	6x10, 6x5
5028	Premium Caramel Topping	6x10, 6x5
5099	Marshmallow topping	6x10, 6x5
6001	Caramel Dip for Apples	6x10
6011	Liquid Hot Chocolate 7+1	6x10
9052	Premium Hot Fudge Topping	6x10, 6x5
9053	“Magic Shell” Chocolate Coating	6x10
	Peanut Butter Topping	6x10, 6x5

SOFT SERVE MIXES

F-4942	Premium Vanilla	12x32oz
F-4943	Premium Chocolate	12x32oz

Try two of our delicious additions this year. Our caramel dip for apples with that great stick to the apple attitude and excellent flavor! High Mountain 7+1 liquid hot chocolate mix, richer and creamier than any other mix available!

FLAVORS FOR FROZEN TREATS



SHERBET BASES

<u>Product #</u>	<u>Description</u>
F-2153	Lemon
F-2154	Lime
F-2155	Orange
F-2156	Raspberry
F-5026	Strawberry
F-5027	Watermelon
F-5039	Kiwi
F-5044	Passion Fruit
F-5045	Pomegranate
F-5046	Key Lime

Available in 2 gallon and 5 gallon pails.

POPSICLE FLAVORS

<u>Product #</u>	<u>Description</u>
F-4968	Cherry
F-4969	Banana
F-4970	Grape
F-4971	Blue Raspberry
F-4972	Lime
F-4973	Orange
F-4996	Root Beer
F-5000	Peach
F-5001	Pineapple
F-5002	Watermelon
F-5003	Coconut

Also Available in Hispanic Flavors: Horchata, Tamarindo, Apricot w/ heat.

- Available in 4x1 gal, 6x1/2 gal, 5 gal. pail, and 55 gal. drum.



YOGURT/CULTURE PRODUCTS

YOGURT FLAVOR BASES

<u>Product #</u>	<u>Description</u>
62-352E	Apricot Mango
62-353	Apricot Mango, Nat.
62-384A	Blueberry
62-812	Blueberry, Nat.
62-406	Cranberry Orange
77-144	Cranberry Raspberry
62-405	Egg Nog
62-382	Lemon
#2-24	Mixed Berry
62-375	Mudslide
62-258	Peach Melba
62-810	Peach, Nat.
62-383	Raspberry
62-380	Strawberry
62-381	Strawberry Banana
62-808	Strawberry Banana, Nat.
62-128	Strawberry Cheesecake
62-165C	Strawberry Kiwi
62-410	Watermelon

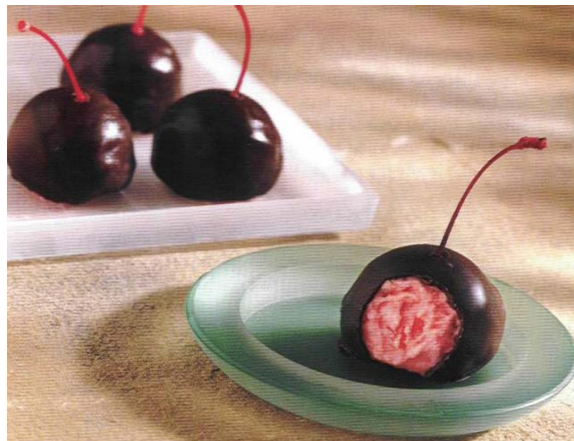
DRINKABLE YOGURT FLAVORS

<u>Product #</u>	<u>Description</u>
F-4499	Strawberry
F-4500	Banana
F-4531	Peach

ALL NATURAL KEFIR FLAVORS

<u>Product #</u>	<u>Description</u>
F-6722	Mixed Berry
F-23	Vanilla
F-6723	Strawberry

PROCESSED CHERRIES FOR ICE CREAM



- Over the years, many of our satisfied customers have made our “Processed Cherries” some of the most preferred items in the trade.
- Our trademark “Burgundy Cherries” are widely used within the ice cream industry. “Burgundy Cherries” are similar to sweet black cherries in terms of taste and texture.
- Red Maraschino Cherries are also a popular item we provide that is used within the ice cream industry.

Burgundy Cherries & Maraschino Cherries are available in:

Solid Pack: Designed for ice cream formulations that require cherries and juices.

Dry Pack: Designed for ice cream formulations that require only cherries.

<u>Code#</u>	<u>Product Description</u>	<u>Pack</u>
#67-170	Burgundy Cherry Halves	Solid Pack
#67-169	Maraschino Cherries	Solid Pack

- Northville Labs. also offers stabilized Strawberries, Peaches, Raspberries, and Apples
- Fruits are available in other forms, such as whole, pieces, halves...

MILK & FORTIFIED DAIRY DRINK FLAVORS



Product

F-5338
F-4338B
F-4898
F-5077
F-5018
F-4899
F-4900
F-9071
F-8001
F-8002
F-8003

Description

Cappuccino
Coffee
Cherry Vanilla
Orange
Orange Cream
Root Beer
Strawberry
Vanilla
Blueberry
Pomegranate
Mixed Berry

- Milk flavors come available with fortification (protein, vitamins B6, B12, niacin, and polyphenols as an antioxidant)
- Available also as energy milk fortified with Caffeine & Taurine.

Jogue Inc. also offers a wide array of stabilizers for use in manufacturing flavored milk from the above flavors.

DAIRY FRUIT DRINK BASES



Jogue Inc. manufactures the finest fruit drink concentrates with a wide variety of fruit juices. Our flavors exceed the national brand products in taste, mouth feel, and overall consumer acceptance.

50% Juice Category:

#51	Apple Juice Base	9+1
#52	Grape Juice Base	9+1
#390	Orange Juice Base 40-1, used with Orange Juice	
#50	Tropical Fruit Punch Base	9+1

These products are designed for USDA fruit drink programs.

10% Juice Category:

#48	Blue Raspberry	50-1
#20N	California Lemonade	50-1
#285	Citrus Punch Drink Base	50-1
#4	Cranberry Cocktail Base	50-1
#001	Grape Juice Drink Base	40-1
#123	Grape Drink Base	50-1
#38A	Kiwi-Strawberry	50-1
#15	Lemonade Drink Base (13% Juice)	50-1
#003	Mango Drink Base	50-1
#005	Orange Drink Base	50-1
#002	Passion Punch Drink Base	40-1
#004	Raspberry Lemonade Drink Base	50-1
F-6129	Strawberry Lemonade Base	50-1
#39N	Tropical Fruit Punch Drink Base	50-1

Not listed in this category are: Lemon Lime, Peach, Strawberry, Cherry.

Premium Less than 5% Juice:

#275	Citrus Punch Drink Base	100-1
#17	Lemon Drink Base	100-1
#30	Pink Lemon Drink Base	100-1

DAIRY FRUIT DRINK BASES II



Low Cost 200-1 Bases

CODE #:	description	conc:
#68-500	Lemon Flavor	200-1
#68-501	Fruit Punch Flavor	200-1
#68-502	Orange Flavor	200-1
#68-503	Grape Flavor	200-1
#68-505	Orange Pineapple Flavor	200-1
#68-506	Blue Raspberry Flavor	200-1
#68-507	Pink Lemonade	200-1

Low Cost 100-1 Bases

CODE #:	description	conc:
#28	Lemon Lime Flavor	100-1
#200	Orange Flavor	100-1
#201	Fruit Punch Flavor	100-1
#202	Lemon Flavor	100-1
#203	Grape Flavor	100-1
#204	Orange Pineapple	100-1
#207	Pink Lemonade	100-1
#611	Orange Flavor	100-1
#68-290	Blue Raspberry Flavor	100-1

Super Premium 100-1 Bases

CODE #:	description	conc:
#23M	Grape Flavor	100-1
#61	Orange Flavor	100-1
#62	Fruit Punch Flavor	100-1
#64	Orange Pineapple Flavor	100-1
#151	Lemon Flavor	100-1
F-3637	Wildberry Flavor	100-1
F-6130	Lemonade Iced Tea	100-1

Premium Punch Bases

<u>CODE #:</u>	<u>DESCRIPTION</u>	<u>CONC:</u>
#285	Citrus Punch 10% Juice	40-1
#685	Citrus Punch	50-1
#686	Fruit Punch	50-1
#687	Orange Mango Tangerine Punch	50-1
#688	Orange Pineapple Cherry Punch	50-1
#4	Stabilizer for Punch	

ICED TEAS

PEACH...



RASPBERRY...

<u>CODE#</u>	<u>DESCRIPTION</u>	<u>REC. USAGE:</u>
#10	Instant Lemon Flavored Tea	37lbs./500gal.
#102	Instant Lemon Flavored Tea	37lbs./500gal.
#108	Instant Lemon Flavored Tea	37lbs./500gal.
#700	Instant Lemon Flavored Tea	37lbs./500gal.
	Regular Sweetened Tea Base	

Designed for Glass Bottles:

#29	Raspberry Tea	33lbs./500gal
#103	Instant Cherry Flavored Tea	40lbs./500gal.
#112	Instant Raspberry Flavored Tea	40lbs./500gal.
#114	Instant Peach Flavored Tea	40lbs./500gal.
#800	Green Tea w/ Honey & Ginseng	25lbs./500gal
#801	Green Tea w/Citrus	15lbs /500gal
F-6505	Diet Green Tea (Snapple type)	
#6457	Decaffeinated Tea w/ Sucralose	20lbs /500gal
#900	Blueberry White Tea	
#901	Raspberry White Tea	

Other flavors available: Apple, Cranberry, Strawberry, Lime, Spice, Orange, Passion Fruit, Cinnamon, Mango, & Kiwi.

Diet Teas

#25	Instant Diet Lemon Flavored Tea	25lbs./500gal.
#28	Diet Tea	27lbs./500gal
#115	Instant Diet Lemon Flavored Tea	25lbs./500gal.

Tea Extract

#50	Fresh Tea Blend	50-1
-----	-----------------	------

JOG-TEC SPRAY DRIED FLAVORS



<u>CODE#</u>	<u>DESCRIPTION</u>	<u>DRINK MIX</u>	<u>GELATIN MIX</u>	<u>PUDDING MIX</u>
70-501	Apple Flavor	.04%	.05%	
70-145	Banana	.04%		
70-104	Cherry WONF, Nat.	.04%		
70-108	Cherry Flavor, Nat. & Art.	.035%	.05%	.04%
70-115	Cranberry Flavor	.04%	.05%	
70-165	Coconut Flavor	.04%		
70-101	Grape Flavor, Nat. & Art.	.045%	.05%	
70-110	Lemon Flavor, Nat. (clear)	.04%	.05%	
75-025	Lemon Juice Powder	.035%		
70-103	Lemonade Flavor, Nat.	.04%		.04%
70-127	Lime Flavor	.035%		
70-102	Orange Flavor, Nat.	.04%		.05%
70-109	Orange Flavor, Nat. (clear)		.05%	
75-030	Orange Juice Powder	.035%		
70-120	Pineapple Flavor, Nat. & Art.	.035%	.04%	.04%
70-006	Raspberry	.305%		
70-138	Strawberry Flavor	.045%		
70-200	Tangerine Flavor	.05%		
70-100	Tropical Fruit Punch	.035%	.04%	
70-146	Watermelon	.035%		

BAKERY FLAVORS



<u>CODE #</u>	<u>Product</u>	<u>Type</u>	<u>Usage:Ozs/100lbs.</u>
F-2540	Almond Extract	Art.	1-2
F-3378	Almond Extract	Nat.	4-8
F-3378	Pure Almond Extract	Nat.	1-8
F-3051	Almond Emulsion	Art.	2-4
F-2991	Amaretto Flavor	Art.	2-4
F-1283	Amaretto Flavor	Nat.	1-2
F-3538	Anise Flavor	Nat. & Art.	1-8
F-3946	Apple Flavor	Nat. & Art.	1-2
F-1018	Banana Extract	Nat.	16-32
F-1810	Banana Flavor	Art.	1-2
F-1797	Banana Flavor	Art.	1-6
F-1324	Black Walnut Flavor	Nat.	1-6
F-2593	Blueberry Flavor	Nat.	8-16
F-2646	Blueberry Flavor	Art.	1-2
F-1678	Brandy Extract	Nat.	1-8
F-3036	Butter Emulsion	Art.	2-6
F-3605	Butter Oil (Oil Base)	Art.	.5-1
F-1785	Butterscotch Flavor	Art.	1-2
F-1711	Butter Pecan Flavor	Art.	1-2
F-651	Butter Pecan Flavor	Nat. & Art.	1-2
F-3097	Butter Pecan Crunch	Art.	2-4
F-3772	Cappuccino Flavor	Nat.	16-32
F-4338	Cappuccino Flavor	Nat. & Art	16-32
F-106	Caramel Flavor	Art.	1-3
F-3908	Caraway Emulsion	Nat.	2-4
F-1081	Cheesecake Flavor	Art.	4-6
F-1671	Cinnamon Extract	Art.	2-4
F-1671	Cinnamon Spice	Nat. & Art.	2-4
F-1814	Cherry Extract	Nat.	4-6
F-876	Cherry Emulsion	Art.	2-6
F-1700	Coconut Flavor	Art.	1-2
F-2732	Coconut Extract	Nat.	16-32
F-3817	Hazelnut	Nat.	1-8
F-3045	Lemon Emulsion	Nat.	2-6
F-3745	Lemon Emulsion w/o Color	Nat.	2-6
F-1505	Lemon Extract (terpeneless)	Nat.	1-3

BAKERY FLAVORS



<u>CODE #</u>	<u>Product</u>	<u>Type</u>	<u>Usage:Ozs/100lbs.</u>
F-2541	Lemon Extract(80% Alcohol)	Nat.	1-2
F-244	Malt	Art.	.5-1
F-1808	Maple Flavor (Canadian)	Art.	2-3
F-4641	Mocha Base	Nat. & Art.	1-16
F-3046	Orange Emulsion	Nat.	2-6
F-1534	Orange Extract (terpeneless)	Nat.	1-3
F-1039	Peppermint Extract	Nat.	1-2
F-1818	Pineapple	Art.	2-3
F-1636	Pistachio Flavor	Art.	1-4
F-330	Raspberry Flavor Conc.	Art.	1-2
F-1816	Raspberry Flavor, Black	Art.	2-4
F-1640	Rum flavor, Dark	Art.	1-2
F-751	Rum Flavor	Art.	1-2
F-1632	Strawberry Flavor, Ripe	Art.	2-4
F-1041	Strawberry Flavor, Fresh	Nat.	8-16
F-925	Strawberry Extract WONF	Nat.	8-16
F-944	Toffee Flavor	Art.	1-3
F-768	Vanilla, Baker White 16:1	Art.	.25-.5
F-3906	Vanilla, White 6X	Art.	1.5-2
F-0022	Vanilla Conc. 8 Fold	Art.	.5-1
F-0026	Vanilla Flavor	Art.	1-2
F-907	Vanilla Blend 6 Fold	Art	.5-.75
F-1745	Vanilla Extract, Pure	Nat.	8-12
F-3756	Vanilla Extract, Pure	Nat.	8-12
F-1883	Vanilla Extract, Pure 2 Fold	Nat	4-6
F-4998	Nat & Art Vanilla Flavor	Nat & Art	3-4

POWDERED BAKERY FLAVORS

<u>CODE #</u>	<u>Product</u>	<u>Type</u>	<u>Rec. Usage:</u>
FW-287	Almond Flavor, Bitter	Art.	.5-1%
F-464	Buttermilk Powder	Art.	.5-1%
F-3695	Cheddar Cheese Powder	Art.	1-2%
70-701	Grape Flavor	Art.	1-2%
70-102	Lemon Flavor	Nat.	1-2%
70-025	Lemon Juice Powder	Nat.	2-3%
70-115	Orange Flavor	Nat. & Art.	1-2%
70-120	Pineapple Flavor	Art.	1-2%
70-100	Fruit Punch Flavor	Art.	1-2%
70-121	Raspberry Flavor	Art.	1-2%
F-136	Vanilla Vanillin	Art.	1-3%
F-3694	Sweet Vanilla Powder	Art.	.5-2%
F-811	Super Van Vanilla	Art.	.5-2%

BAKERY FLAVORS



ARTIFICIAL COLORS

C-404	Golden Orange Color	Art.	.2-5%
C-406	Sunset Yellow Color	Art.	.2-5%
C-415	Green Food Color	Art.	.2-5%
C-417	Blue Color	Art.	.2-5%
C-418	Red Raspberry Color	Art.	.2-5%
C-419	Egg Shade Color	Art.	.2-.5%
C-420	Red Color	Art.	.2-.5%
C-421	Yellow Food Color	Art.	.2-5%
C-447	Chocolate Color	Art.	.2-5%
C-512	Burgundy Cherry Color	Art.	.2-5%
C-514	Raspberry Color	Art.	.2-5%
IN-27	Caramel Color	Art.	.2-5%

ESSENTIAL OILS

EO-02	Anise Oil	.01-.1%
EO-07	Cassia Oil	.01-.1%
EO-18	Lemon Oil	.01-.1%
EO-22	Orange Oil	.01-.1%
F-6471	Peppermint Oil	.01-1%

CONFECTIONARY FLAVORS

Use in Ozs. Per 100lbs.



<u>CODE#:</u>	<u>FLAVOR</u>	<u>HARD CANDY</u>	<u>FONDANTS PECTIN JELLIES</u>	<u>GEN USE:</u>
F-2540	Almond Extract		2-3	2-3
F-2991	Amaretto Extract		2-4	2-6
F-1798	Apple, Fresh		2-4	2-6
F-265	Apple, Sour	1-2	.75-2	1-2
F-267	Apple, Golden Delcs	1-2	.75-2	1-2
F-1810	Banana Extract	2-3	1-3	1-3
F-144	Banana Cream	1-2	1-1.5	1-3
F-105	Blueberry	.5-1	.75-1	.5-2
F-1825	Bourbon Whiskey	.5-1	.5-1	.5-2
F-1678	Brandy	2-3	2-3	2-3
F-1715	Butter Concentrate			1-5
F-108	Butter Conc., Fresh	1-2	.75-2	.75-2
F-651	Butter Pecan		2-3	1-4
F-1711	Butter Pecan	2-3	1-3	
F-185	Butter Rum	2-3	2-2.5	2-4
F-1614	Butter Vanilla	1-2	1-2	
F-1785	Butterscotch	2-3	1-3	1-4
F-106	Caramel		3-4	3-6
F-1819	Cherry, Sweet		3-4	3-6
F-1716	Cherry, Black	.5-2	.5-1	1-2
F-162	Cherry, Wild	1-2	1-2	1-3
F-1671	Cinnamon Extract		2-4	2-4
F-1700	Coconut Extract	2-3	1-2	1-3
F-1045	Coffee Extract		8-16	8-16
F-147	Cream		1-2	1-2
F-1047	Crème de Menthe		.5-2	.5-2
F-224	Grape, Concord	2-3	1-2	1-4
F-1615	Grape Concentrate	1-2	1-2	1-3
F-190	Grape, Fresh	.5-2	.5-1	.5-2
F-1505	Lemon Extract		1-2	1-2
F-1532	Lime Extract		1-2	1-4
F-1916	Licorice Extract	2-3		

CONFECTIONARY FLAVORS

Use in Ozs. Per 100lbs.



<u>CODE#:</u>	<u>FLAVOR</u>	<u>HARD CANDY</u>	FONDANTS <u>PECTIN JELLIES</u>	<u>GEN USE:</u>
F-1808	Maple, Canadian		1-2	2-4
F-1616	Maple Concentrate		.5-1	1-2
F-1534	Orange Extract		1-2	1-4
F-1888	Peach Extract		1-2	.5-2
F-1721	Peppermint Extract		1-2	1-4
F-1718	Pineapple, Fresh	1-2	.5-1	.5-2
F-1818	Pineapple Extract	1-2	.5-1	.5-2
F-1636	Pistachio Extract		2-3	2-4
F-1816	Raspberry, Red		1-3	2-6
F-2093	Raspberry Fruit Concentrate		4-8	4-8
F-1840	Raspberry, Black		1-2	1-3
F-2980	Raspberry, Fresh	2-3	1-3	2-4
F-1713	Root Beer	1-2	.75-1	1-2
F-1640	Rum Extract		1-2	1-3
F-1574	Rum Punch		1-2	1-3
F-119	Strawberry Concentrate	1-2	.5-1	.5-2
F-1632	Strawberry Extract		1-2	1-2
F-1788	Strawberry, Fresh	1-2	.5-1	.5-2
F-2128	Strawberry Fruit Concentrate		8-12	8-16
F-1708	Vanilla Concentrate	2-3	.5-1	1-2
F-1801	Vanilla Cream		1-1.5	2-4
F-1324	Walnut, Black		2-3	2-4
F-2608	Watermelon	1-2	.5-1	.5-2
F-1841	Wintergreen Extract		1-2	1-3

Natural & Imitation Essential Oils

Use in Ozs. Per 100 lbs.

EO-01	Bitter Almond Oil, Imt	1-2
EO-02	Anise Oil, Imitation	1-2
EO-03	Casia Oil, Imitation	1-2
EO-04	Lemon Oil, Imitation	1-2
EO-05	Lime Oil, Imitation	1-2
EO-06	Orange Oil, Imitation	1-2
EO-07	Peppermint Oil, Redistilled	1-2
EO-08	Spearmint Oil	1-2
EO-09	Wintergreen Oil, Imt	1-2

SAVORY & SPECIALTY FLAVORS



<u>CODE#</u>	<u>DESCRIPTION</u>	<u>DRY MIXES</u>
70-134	Almond Flavor, Nat. & Art.	.5-.6%
75-027	Barbeque Seasoning Conc.	2-3%
70-132	Beef Flavor, Nat.	3-4%
70-123	Cardamom Flavor, Nat.	2-.3%
F-4467	Cheddar & Bacon Seasoning	2-3%
70-106	Cheese Powder, Snack	5-8%
70-130	Chicken Flavor, Nat.	3-4%
70-131	Chicken Flavor, Nat. & Art.	2-3%
3688	Chicken Seasoning	4-5%
70-133	Cream Flavor, Nat. & Art.	1-2%
75-029	Curry Seasoning Conc.	2-3%
F-6136	French Onion Seasoning	2-3%
F-6137	Jalapeno Pepper Seasoning	2-3%
70-124	Peppermint Flavor, Nat.	.2-.4%
F-4443	Ranch Seasoning	2-3%
70-122	Rose Petal Flavor, Art.	.2-.4%
F-4442	Salsa Seasoning	2-3%
75-028	Sausage Seasoning Conc.	2-3%
	Soy Sauce Powder	1-3%
3060	Vanilla Flavor, Nat. & Art.	.3-.5%
3701	Worcestershire Sauce Powder	1-3%



MANUFACTURING FACILITIES

PLYMOUTH, MI



NORTHVILLE, MICHIGAN



SANTA FE SPRINGS, CALIFORNIA



CERTIFICATE OF ACHIEVEMENT



We Set the STANDARDS

**Jogue Inc/Northville Laboratories
Northville, Michigan**

*Was inspected by a qualified AIB International Inspector on
February 6, 2009*

*and at that time was found to have fulfilled the requirements of the
AIB International Consolidated Standards for Food Safety.*

Announced

900

James R. Mungro
President

William J. Henry
VP, Food Safety Education

Th. M. M. M.
Chairman of the Board

Margaret L. O'Brien
VP, Audit/Technical Services

SUPERIOR

